



Supported using public funding by
**ARTS COUNCIL
ENGLAND**

10th Anniversary Celebration

HEAR AND NOW

SUITS & BALLOONS

Sunday 17 November 2019, 7pmw
University of Bedfordshire Theatre

philharmonia
orchestra

ORCHESTRAS *Live*



© Nikolaj Schubert

philharmonia
orchestra

ORCHESTRAS *Live*

10th Anniversary Celebration

HEAR AND NOW

SUITS & BALLOONS

CONTENTS

About <i>Hear and Now</i>	Page 4
Programme Notes	Page 5
Interview with XXXX	Page 7
Project Participants	Page 8
Artist Biographies	Page 10
Supporters & Thanks	Page 15

ABOUT HEAR AND NOW

Welcome to this evening's performance, marking the 10-year anniversary of the *Hear and Now* project. Produced by the Philharmonia Orchestra and Orchestras Live, the initiative is built on an extraordinary long-term creative partnership with the Tibbs Dementia Foundation's Music 4 Memory and Fusion Youth Singing.

Hear and Now aims to encourage social cohesion, teamwork, improved morale and increased confidence amongst its participants. Through open workshops involving facilitated discussions on stereotypes, lived experiences, and shared language between different generations and cultures, combined with creative music and movement workshops, participants provide both the inspiration for, and directly contribute to the music and lyrics of the final performance.

The contributions take the form of spoken and musical ideas, emotions, memories and ambitions; providing a therapeutic element for participants living with dementia, improving understanding and communication with younger participants, and enabling isolated people to build valuable relationships with others from their local community.

Young and old participants from Fusion Youth Singing and Music 4 Memory form the core group of *Hear and Now* each year. Since 2009, they have been joined by a number of other groups, including musical contributions from the wider Queens Park community, including the First Generation Italian Club (a local choir involving local first generation Italian

immigrants), Pooja Gupta (an Indian singer based in Bedford), Bedfordshire Choral Society and Promethidion (a song and dance group aiming to promote Polish culture and traditions in the local community). Every year the project has grown in scope and musical ambition, and in 2013 Music 4 Memory and Fusion Youth Singing joined forces with North Bedfordshire Youth Chamber Orchestra and Da Capo String Ensemble (an adult string group for beginners/returners).

In 2019, we incorporate dance, movement and film into our performance through a new partnership with the University of Bedfordshire. Over the last 10 years, the *Hear and Now* ensemble has performed at All Saints Church in Queens Park, Bedford Corn Exchange and the Royal Festival Hall in London.

The music and movement the participants have created for this evening's culmination have been crafted under the guidance of Tim Steiner and Amalia Garcia, supported by musicians from the Philharmonia Orchestra. We hope you'll be inspired by this heartfelt performance.

PROGRAM NOTES

Mi, et offic tendani temporum dolorporem. Itatur sit fuga. At mi, sum rem qui am qui sunt officiat. Aliandem ea si idit, officius doluptae. Magnatem fugit etur? Qui ipicabo rempost res modignias etur aut digendi oreped utam quia doluptatis in evenimus et et ut platuri oreribus, velitas seditionation parunt.

Ro vollignis velignatium, tem quunt od quiam ape voluptiist asint que sitatibus re et lat velendit ommosaes quost faccabo ribusci tor sapid ex expereruntia plis ium re rerum earunt, odigendero to coriatur, aliquid ustenis ero vene id magniendit rest, sus qui odit qui comnihic-tur, omnihitia core cus et prestis siment ute cus explitat arum faceate ni digent et res debitia ssimi, non nihillab ipid et id que vide pliquam, sum faccus vel illa que sint quiaae. Nam, ut que pa parcipsae nus apiendunt ventore dolor sit, que necaeseatio omnimporro quias consec-tur se voluptatur? Qui bereicim quias nest, qui dese-quiam int fuga. Tempelenis arum quiam quam fugiam, to cus as conse nonsequam idist volut quatur ant.

Vellandi doluptae essit fugit litatae sus dem aces eatur sunt cum qui cusamus arcide ipis qui volorent quun-tiumet re omni officii scidus, totatectem sitium eatio est exerum ernam, aut rectures asi sectatem lat. To des aces dis magnist, conet quia soloreprovit laborum earumqui ut volori commolorem quaes doluptaerunt et voluptatiur?

Ped excerum as inctis et enitaturion ra nonsed qui dolupta denis minulla ciisciasi sam quis si cum fugia nim dignihi ciendi accessum latius, im quis mi, amusant quibus remossime eat odit velestis dit ut aliam, tem autat.



© Nikolaj Schubert

Mi, que pre, odianda essit, se pe volupta spedign ihilis samenim idia cullecae eost, que volo et, nis estius nit minvelitassi aut evenis vernam et aut volupti asperovit volessequi si sunt maione sectatur acesten dipitatem volum estrum volo omnis apit fuga. Ut quam ex evero dellest, nonse ma voluptur am nobis reicae nonsequat faces audae od quam sam, odit optaquodis dolorro eumqui a non porerovid esti tem nonsed que natio torest, quat est, voluptatus, odicidis dolorit optaquam aut aris del incto omnis verro temporem excerum eremperum dit labo. Ut alistis inverias molumqu odicabo rentior eperia sit eiciend ucipictio cus illupta conse sinvenim-pore volorem sequis magnihi llaboria quatiat labore, et volecest unt atus eatatec tiurepe llaccaborro maximin rehendus que.

Mi, et offic tendani temporum dolorporem. Itatur sit fuga. At mi, sum rem qui am qui sunt officiat. Aliandem ea si idit, officius doluptae. Magnatem fugit etur? Qui ipicabo rempost res modignias etur aut digendi oreped utam quia doluptatis in evenimus et et ut platuri oreribus, velitas seditiation parunt.

Ro vollignis velignatium, tem quunt od quiam ape voluptiist asint que sitatibus re et lat velendit ommosaes quost faccabo ribusci tor sapid ex expereruntia plis ium re rerum earunt, odigendero to coriatur, aliquid ustenis ero vene id magniendit rest, sus qui odit qui comnihicatur, omnihitia core cus et prestis siment ute cus explitat arum faceate ni digent et res debitia ssiimi, non nihillab ipid et id que vide pliquam, sum faccus vel illa que sint quiaae. Nam, ut que pa parcipsae nus apiendunt ventore dolor sit, que necaesecatio omnimporro quias consecatur se voluptatur? Qui bereicim quias nest, qui desequiam int fuga. Tempelenis arum quiam quam fugiam, to cus as conse nonsequam idist volut quatur ant.

Vellandi doluptae essit fugit litatae sus dem aces eatur sunti cum qui cusamus arcide ipis qui volorent quuntiumet re omni officii scidus, totatectem sitium eatio est exerum ernam, aut rectures asi sectatem lat. To des aces dis magnist, conet quia soloreprovit laborum earumqui ut volori commolorem quaes doluptaerunt et voluptatiur?

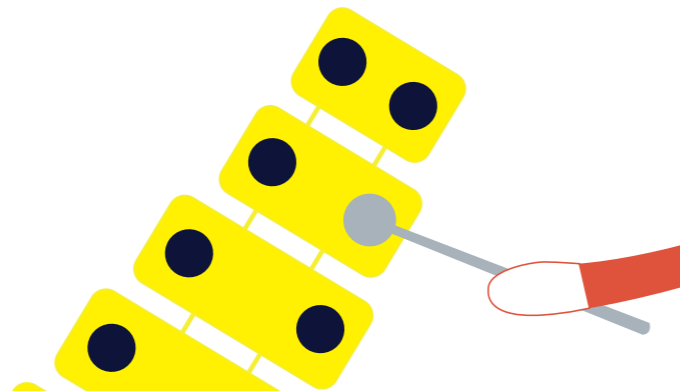
Ped exerum as inctis et enitaturion ra nonsed qui dolupta denis minulla ciisciasi sam quis si cum fugia nim dignihi ciendi accessum latius, im quis mi, amusant quibus remossime eat odit velestis dit ut aliam, tem autat.

Mi, que pre, odianda essit, se pe volupta spedign ihilis samenim idia cullecae eost, que volo et, nis estius nit minvelitassi aut evenis vernam et aut volupti asperovit



© Nikolaj Schubert

volessequi si sunt maione sectatur acesten dipitatem volum estrum volo omnis apit fuga. Ut quam ex evero dellest, nonse ma voluptur am nobis reicae nonsequat faces audae od quam sam, odit optaquodis dolorro eumqui a non porerovid esti tem nonsed que natio torest, quat est, voluptatus, odicidis dolorit optaquam aut aris del incto omnis verro temporem exerum eremperum dit labo. Ut alistis inverias molumqu odicabo rentior eperia sit eiciend ucipictio cus illupta conse sinvenim-pore volorem sequis magnihi llaboria quatiat labore, et volecest unt atus eatatec tiurepe llaccaborro maximin rehendus que.



INTERVIEWS

Mi, et offic tendani temporum dolorporem. Itatur sit fuga. At mi, sum rem qui am qui sunt officiat. Aliandem ea si idit, officius doluptae. Magnatem fugit etur? Qui ipicabo rempost res modignias etur aut digendi oreped utam quia doluptatis in evenimus et et ut platuri oreribus, velitas seditiation parunt.

Ro vollignis velignatium, tem quunt od quiam ape voluptiist asint que sitatibus re et lat velendit ommosaes quost faccabo ribusci tor sapid ex expereruntia plis ium re rerum earunt, odigendero to coriatur, aliquid ustenis ero vene id magniendit rest, sus qui odit qui comnihicatur, omnihitia core cus et prestis siment ute cus explitat arum faceate ni digent et res debitia ssiimi, non nihillab ipid et id que vide pliquam, sum faccus vel illa que sint quiaae. Nam, ut que pa parcipsae nus apiendunt ventore dolor sit, que necaesecatio omnimporro quias consecatur se voluptatur? Qui bereicim quias nest, qui desequiam int fuga. Tempelenis arum quiam quam fugiam, to cus as conse nonsequam idist volut quatur ant.

Vellandi doluptae essit fugit litatae sus dem aces eatur sunti cum qui cusamus arcide ipis qui volorent quuntiumet re omni officii scidus, totatectem sitium eatio est exerum ernam, aut rectures asi sectatem lat. To des aces dis magnist, conet quia soloreprovit laborum earumqui ut volori commolorem quaes doluptaerunt et voluptatiur?

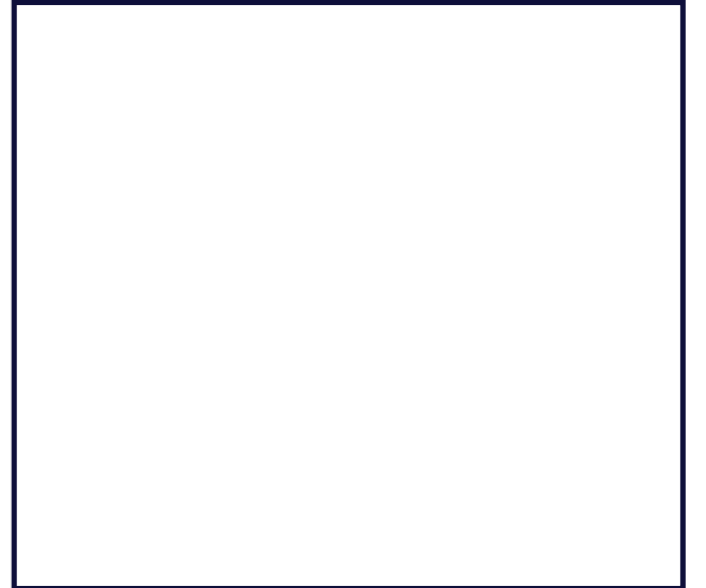
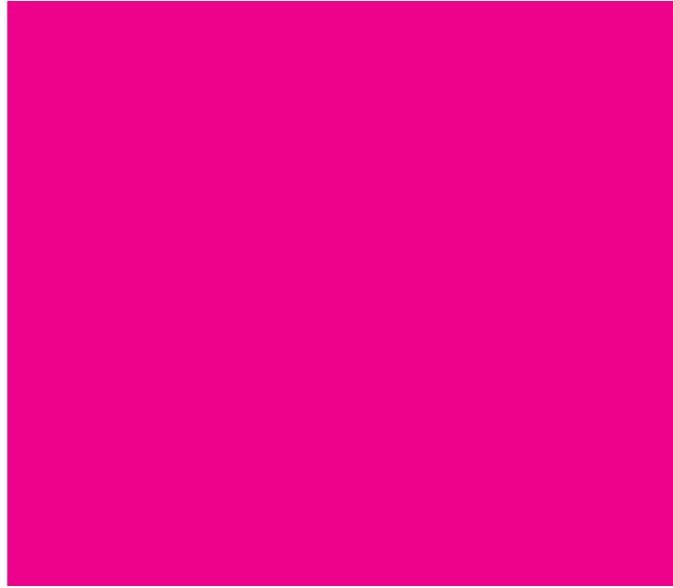
Ped exerum as inctis et enitaturion ra nonsed qui dolupta denis minulla ciisciasi sam quis si cum fugia nim dignihi ciendi accessum latius, im quis mi, amusant quibus remossime eat odit velestis dit ut aliam, tem autat.

Mi, que pre, odianda essit, se pe volupta spedign ihilis samenim idia cullecae eost, que volo et, nis estius nit minvelitassi aut evenis vernam et aut volupti asperovit volessequi si sunt maione sectatur acesten dipitatem volum estrum volo omnis apit fuga. Ut quam ex evero dellest, nonse ma voluptur am nobis reicae nonsequat faces audae od quam sam, odit optaquodis dolorro eumqui a non porerovid esti tem nonsed que natio torest, quat est, voluptatus, odicidis dolorit optaquam aut aris del incto omnis verro temporem exerum eremperum dit labo. Ut alistis inverias molumqu odicabo rentior eperia sit eiciend ucipictio cus illupta conse sinvenim-pore volorem sequis magnihi llaboria quatiat labore, et volecest unt atus eatatec tiurepe llaccaborro maximin rehendus que.



© Nikolaj Schubert

PROJECT PARTICIPANTS



ARTIST BIOGRAPHIES



© Beth Walsh

Tim Steiner, Artistic Director

Ipicabor si occupant re occae sim erferior acest, sum escilit qui tem et quossus remque magnat quatessi doluptur maio. Et laut in rem faceribus adi cus dolupta turestent, soluptaecto is aliatur? Iderspeditio quatecus aligeni tature providus simi, ut adit, tection sequisqui dolestis repudandic te et doluptaque nis soluptatias aliquid esto quam essimus molo tem reptias. Nobitat eatecte velent est, sus sequame volupta tectassi vid qui dis arciet as molor modio ma sequibea inctur? Uciducium re, voluptiam que illesci issimposa dolupta entia consend esecum quide doluptatem denis aut am eos voluptat aut as de laccatur accuscil magnam, voloriat unt. Aligniam, quia suntusant offic temolende prature libus, consecum, quam illestium lit, ommo to cus eaquo quisi berfern atibusti adist, vel incid quidel maxima acerovitium velendel is ipis mos etus aut aut pore eum rerum ex esenisi magnam et voluptisquis endem que et eaquo velisqui cus sundi toribusant fuga. Nequam, quaepe cus suntum illaccullit parum facipid que prerspit ma dolorit rem que nusa eligent explate ctusdania doluptas ute eat. Riaepero excea sa nis cus, simustiaero occusandit ex etur res dios alibusc itatqui si sunt adit, sedist harum quundus derspedisi delestis dem es corepel ium, consedi tatquossusae con posam rerum, que digenti ncientis is.



© XXX

Amalia Garcia, BA, MA, FHEA Performance Artist

Senior Lecturer in Dance and Performance and Course Coordinator for BA(Hons) Performing Arts, University of Bedfordshire.

Amalia is a performance artist and an academic. Originally from Spain, she worked as a freelance performer, dancer and community practitioner with Retina, Willi Dorner Cie and Ersatz Dance. Amalia was a teaching Fellow in Dance at De Montfort University and became a full-time Lecturer in Dance and Performance at the University of Bedfordshire in 2009.

The focus of her research is practice-based research in dance and interdisciplinary dance-theatre performance. Her work focuses on the creation of poetic theatrical environments aided by technology. Through improvisation and play, Amalia's work explores the creation of new movement by challenging, questioning and become curious about the body's habitual and familiar patterns.

Music 4 Memory

Music 4 Memory is a community music therapy service offered by Tibbs Dementia Foundation in Bedford Borough.

People with Dementia or concerns over memory loss and their family/carers meet weekly in a supportive, creative environment to sing, play instruments, dance, share stories and poetry.

Taking part in *Hear and Now* helps us to challenge negative perceptions and to share the message that, with the right support, it is possible to live well with Dementia. We are very grateful to all involved for this fantastic, validating opportunity.

Fusion Youth Singing

Fusion Youth Singing is a multi-faith community project that has been successfully helping children and young people to celebrate the cultural diversity of their Queens Park community through music since 2004. Fusion provides high-quality musical opportunities that harvests the creative talents of the youngsters.

Using singing as a bridge across the lines of race and religion, young disadvantaged people are brought together from diverse backgrounds to sing and make music together on a weekly basis during term time.

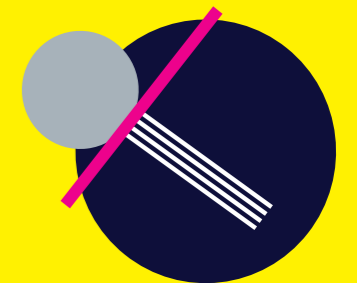
We are pleased to be founding partners of the *Hear and Now* project, and look forward with committed enthusiasm and dedication to future collaborations with our partners in years to come.

University of Bedfordshire

The University of Bedfordshire is a leading university for expanding higher education opportunities for people from all backgrounds. We inspire our diverse student body to achieve ambitious goals, supporting them to engage in their own personal journey of learning and development, whatever their background, to succeed.

We develop world leading research and knowledge exchange to broadening understanding and horizons across the sectors we engage, making a difference to business, the public sector and policy makers.

We take responsibility for our unique role in supporting our communities, improving public service delivery, quality of life and civic engagement.





Philharmonia Orchestra © Katherine Leedale

Philharmonia Orchestra

Founded in 1945, the Philharmonia is a world-class symphony orchestra for the 21st century. Based in London at Southbank Centre's Royal Festival Hall, and with a thriving national and international touring schedule, the Philharmonia creates thrilling performances for a global audience. The Orchestra is led by Finnish conductor and composer Esa-Pekka Salonen, its Principal Conductor & Artistic Advisor since 2008. Fellow Finn Santtu-Matias Rouvali takes over from Salonen as Principal Conductor in the 2021/22 season.

The Philharmonia is a registered charity that relies on funding from a wide range of sources to deliver its programme and is proud to be generously supported by Arts Council England.

The Philharmonia performs around 50 concerts a year at its Southbank Centre home. Under Salonen and other key conductors, the Philharmonia has created a series of critically-acclaimed, visionary projects, distinctive for both their artistic scope and supporting live and digital content. In 2019, Salonen presented *Weimar Berlin: Bittersweet Metropolis*, a celebration of the Weimar Republic era through the prism of its music, drama and film.

The Philharmonia is orchestra-in-residence at venues and festivals across England: Bedford Corn Exchange, De Montfort Hall in Leicester, The Marlowe in Canterbury, Anvil Arts in Basingstoke (where it is Orchestra in Partnership), the Three Choirs Festival in the West of England, and Garsington Opera. At the heart of the Orchestra's residencies is an outreach and engagement

programme that empowers people in every community to engage with, and participate in, orchestral music. Its flagship Orchestra Unwrapped project for schools encompasses concerts, in-school workshops and teacher training, delivered in partnership with Music Hubs; intergenerational creative music-making community project *Hear and Now* brings together people living with dementia and their carers with young musicians; and urban-classical project *Symphonize* engages vulnerable teenagers.

Internationally, the Philharmonia is active across Europe, Asia and the USA. The 2019/20 season sees the Orchestra embark on major tours with Esa-Pekka Salonen, including Japan in January 2020.

The Philharmonia's international reputation in part derives from its extraordinary recording legacy, which in the last 10 years has been built on by its pioneering work with digital technology. VR experiences featuring music by Sibelius, Mahler and Beethoven, placing the viewer at the heart of the orchestra, have been presented at Southbank Centre and internationally.

The Philharmonia's Principal International Partner is Wuliangye.



Orchestra Live

Orchestras Live believes orchestras are for everyone. We create environments where music and creativity can thrive. We work to ensure communities across the country have access to world-class orchestral experiences.

With over 50 years' experience, we make orchestral music relevant to people's lives through dynamic partnerships and innovative projects, particularly in culturally under-served areas of England. We champion audience development; inspire the young and rejuvenate the old, giving communities voice, and joining generations in award-winning projects.

Within the sector, we develop talent to increase quality, diversity and sustainability of music delivery and participation. We occupy the heart of the orchestral world, leading thought, learning new approaches, stimulating debate and driving change.

Orchestras Live is a national charity and an Arts Council England portfolio organisation.

orchestraslive.org.uk

ORCHESTRAS *Live*

IN 2020 WE WANT THE CHILDREN OF BEDFORD to EXPERIENCE LIVE MUSIC & BE INSPIRED to PLAY!

TO DONATE VISIT SPACEHIVE/GIGS4KIDS

Bedford Music Cooperative | MUSIC FOR BEDFORD BOROUGH | THE PAD PRESENTS | philharmonia orchestra | BEDFORD CREATIVE ARTS | ARTS COUNCIL ENGLAND

FAMILY CONCERT OLYMPIC SPIRIT
SUNDAY | 8 MARCH, 2PM
DE MONTFORT HALL

LET'S GO!

FASTER, HIGHER, STRONGER - explore the colourful world of a symphony orchestra in our friendly afternoon show for all the family!

Join us for an exciting concert celebrating the Olympic spirit - the perfect way to get inspired for Tokyo 2020. Hear musical favourites from film and television, as well as timeless classics for symphony orchestra.

- Recommended age 5+
- Running Time: 1 hr, no interval
- Adults £16.50; £13.50; £9.50
- Under 18s £8.25; £6.75; £4.75

YES

SUPPORTERS & THANKS

Hear and Now is generously supported by:

Andor Charitable Trust
The Arts Society
The D'Oyly Carte Charitable Trust
McClay Dementia Trust
The Neighbourly Charitable Trust

St John's Hospital Trust
The Wixamtree Trust
And a funder that wishes to remain anonymous

Thank you to:

All Saints Parish Church
Bedford Music Co-Op
Bedfordshire Music Trust

Jan Kaznowski
University of Bedfordshire

A special thanks to all the parents, volunteers, helpers and performers who have worked to bring this evening's performance to the stage, particularly:

Stephen Buckle
Rosemary Buckle
Danita Goodwin
Johanne Hudson-Lett

June Kuria
Jeni Melia
Sarah Russell
Revd Sonia Wratten